

PARK HOUSE  
LONDON W1

MAYFAIR

APARTMENT 207



## SPECIFICATION

Duplex apartment

---

Furnished

---

1 bedroom, 1 bathroom

---

North facing views across Oxford Street

---

Fully integrated Crestron home automation system

---

Ready to use state of the art AV systems

---

Gaggeneau and Miele kitchen appliances

---

Comfort cooling system

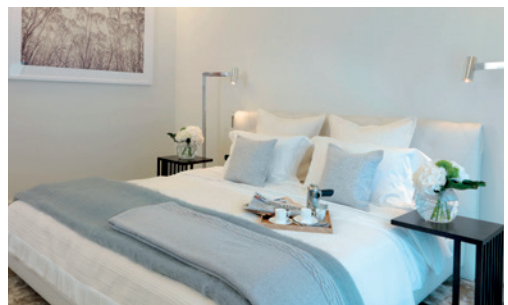
---

24 hour security and bespoke concierge service

---

Secure allocated parking

---



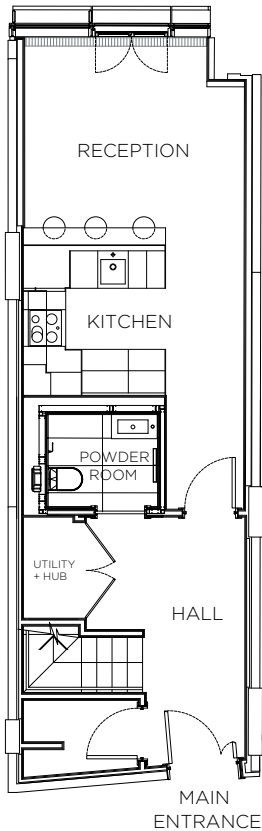


PARK HOUSE  
LONDON W1

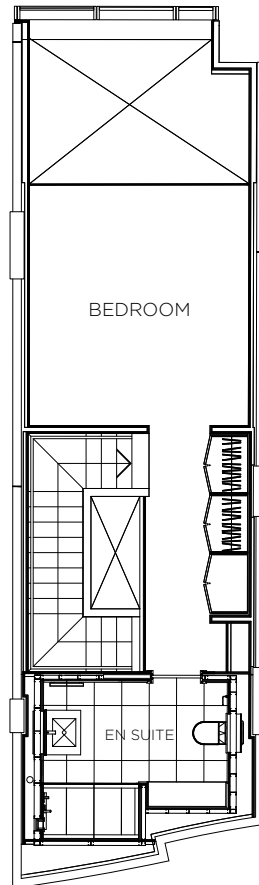
MAYFAIR

# UNIT 207

866 SQ FT (80 SQ M)



LOWER FLOOR



UPPER FLOOR

FLOORPLANS ARE NOT TO SCALE. FOR INDICATIVE PURPOSES ONLY

## IMPORTANT NOTICE

1. Particulars: These particulars are not an offer or contract, nor part of one. You should not rely on statements by the agents in the particulars or by word of mouth or in writing ("information") as being factually accurate about the property, its condition or its value. An elected agent nor any joint agent has any authority to make any representations about the property, and accordingly any information given is entirely without responsibility on the part of the agents, seller(s) or lessor(s).
2. Photos etc: The photographs show only certain parts of the property as they appeared at the time they were taken. Areas, measurements and distances given are approximate only.
3. Regulations etc: Any reference to alterations to, or use of, any part of the property does not mean that any necessary planning, building regulations or other consent has been obtained. A buyer or lessee must find out by inspection or in other ways that these matters have been properly dealt with and that all information is correct.
4. VAT: The VAT position relating to the property may change without notice. December 2018