



PARK HOUSE  
MAYFAIR

COMING NOVEMBER 2026



Park House offers premium and highly-specified workspace, with a brand new reception and end of trip amenity, minutes from Hyde Park.

# Ambition deserves a landmark address



AVAILABILITY

The part 4th floor at Park House benefits from floor-to-ceiling windows, providing a vast amount of natural light and views across Mayfair and the West End.

14,983 sq ft  
available  
November 2026



4th floor office reception



4th floor open office



4th floor cellular office



# Part 4th Floor

## Specification

14,983 sq ft / 1,391 sqm

Brand new reception totalling c.2,328 sq ft

Redesigned and enlarged end of trip facilities

224 cycle spaces, 16 showers, 56 lockers

2x 2000kVA generators providing 100% tenant back up power

2.75m floor to ceiling height

Four pipe fan coil AC

Fresh air supply 1.8 l/s

Occupational density of 1:10 per sq m

Tenant car parking

VIP Taxi drop off

BREEAM Very Good

EPC 'B' rating

100% energy efficient LED lighting



PARK STREET

OXFORD STREET

52.8m

43.1m

17.1m

40.9m

10.5m

NORTH ROW

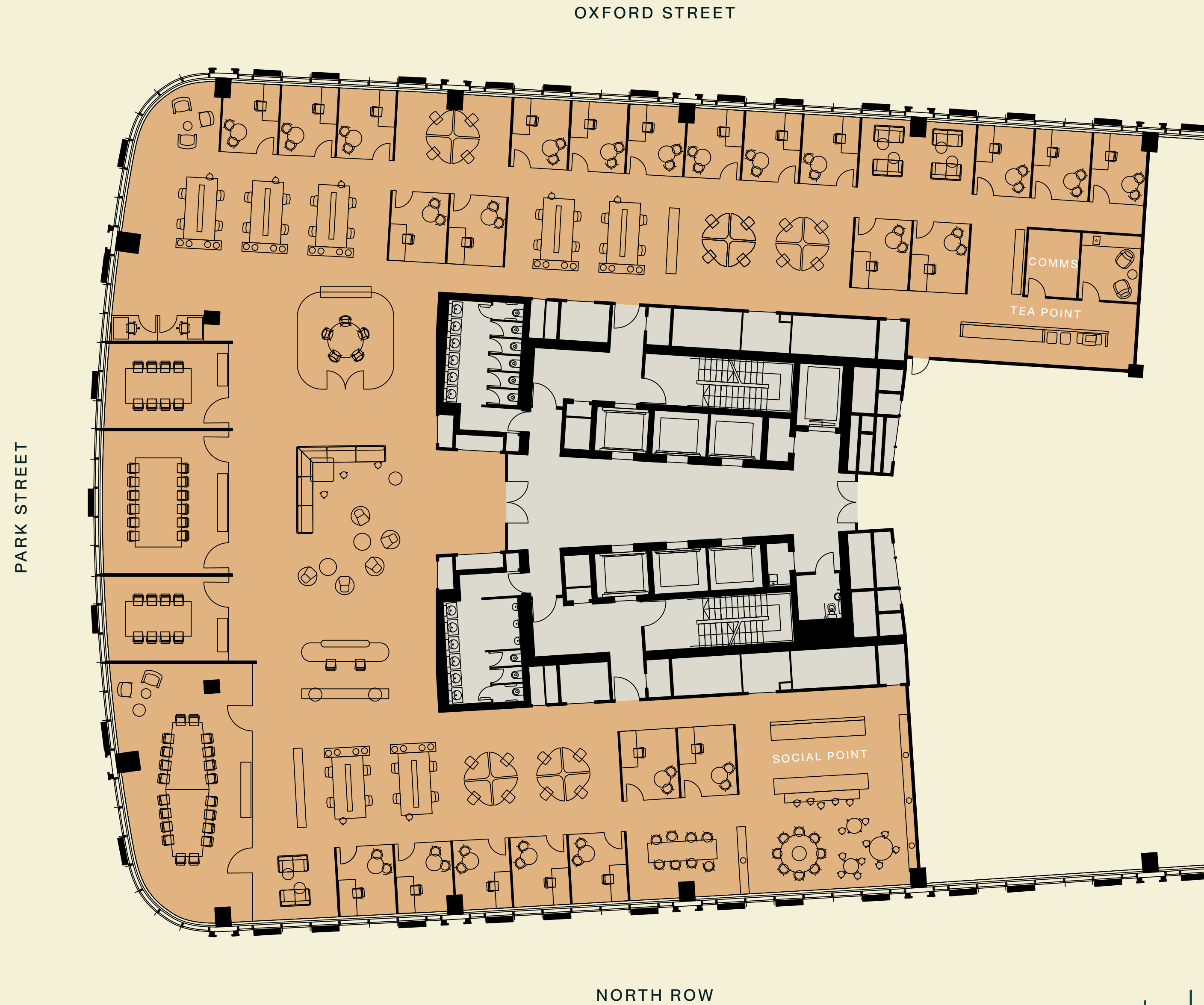
# Part 4th Floor

Cellular office

Total NIA	14,983 sq ft / 1,391 sqm
Open desk seats	44
Private offices	23
Density	1:20

## MEETING ROOMS

20 person boardroom	1
12 person meeting room	1
8 person meeting rooms	2
6 person meeting room	1
Focus rooms	2
Social hub	1



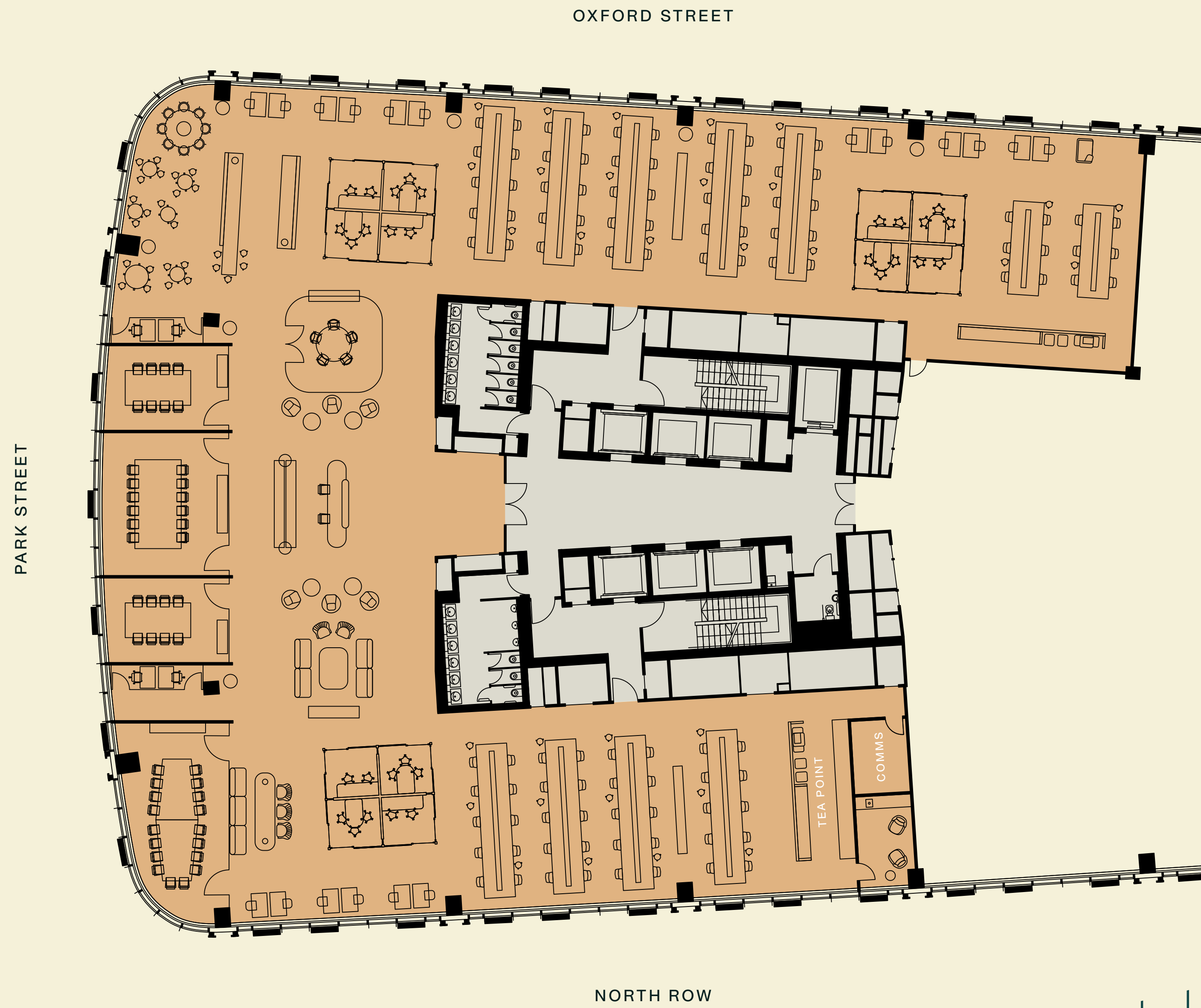
# Part 4th Floor

Open plan

Total NIA	14,983 sq ft / 1,391 sqm
Open desk seats	120
Density	1:12

## MEETING ROOMS

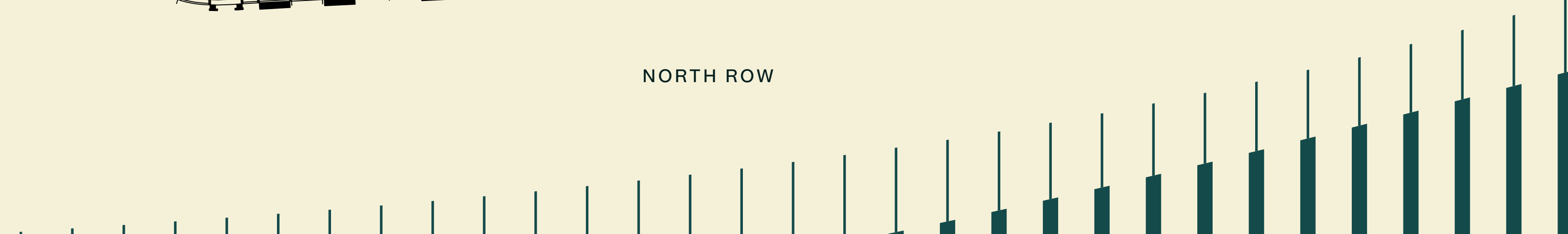
18 person boardroom	1
12 person meeting room	1
8 person meeting rooms	2
5 person meeting room	1
3 person meeting rooms	6
1-2 person focus room	10
Social hub	1



PARK STREET

OXFORD STREET

NORTH ROW



An enhanced arrival experience coming autumn 2026





## New luxury facilities

Newly refurbished and enlarged end of trip facilities located at basement level. Including new showers, changing rooms and lockers, as well as 224 cycle spaces.

# Find your rhythm



## LOCATION

The location brings the very best of the area within reach, classic and modern Mayfair, Selfridges on the doorstep, Marylebone's boutiques, cafés and restaurants, and Hyde Park for green space and downtime.

### RESTAURANTS

- 1 Nobu
- 2 The Wallace
- 3 St JOHN
- 4 Delamina
- 5 Lina Stores
- 6 Zoilo
- 7 Sunday in Brooklyn
- 8 Brasserie of Light
- 9 Mercato Mayfair
- 10 The Ivy Asia
- 11 Roka
- 12 Corrigan's Mayfair

### HOTELS

- 1 The Cumberland Hotel
- 2 Hyatt Regency The Churchill
- 3 The Chancery Rosewood
- 4 Claridge's
- 5 The Connaught

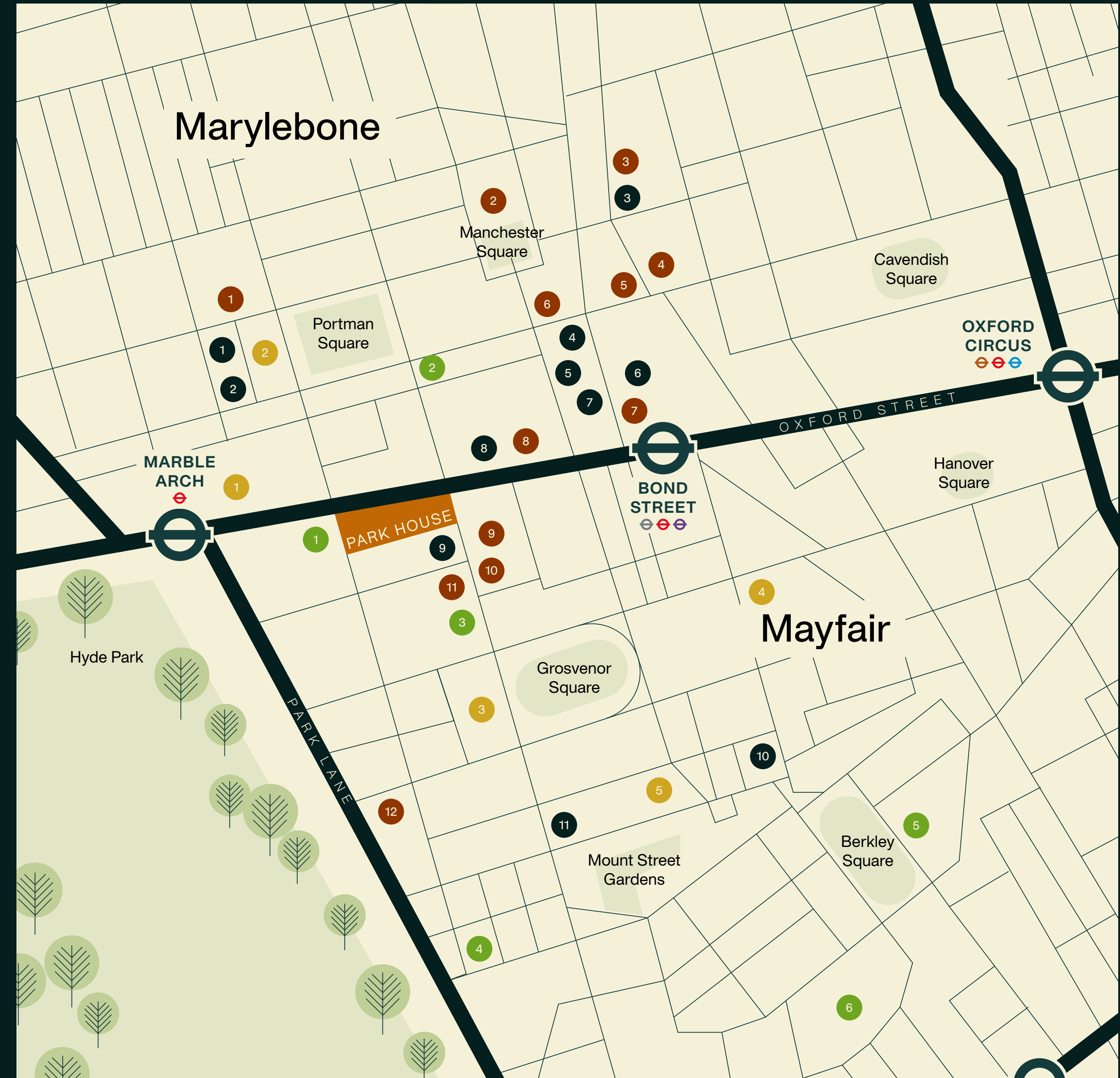
### CAFÉS & BARS

- 1 Grazing Goat
- 2 Daisy Green
- 3 The Coach Makers Arms
- 4 Prezzemolo & Vitale
- 5 Arôme Bakery
- 6 Lamb & Flag
- 7 Panadera
- 8 Selfridges Foodhall
- 9 The Marlborough
- 10 Hedonism Wines
- 11 The Audley

### GYMS

- 1 Virgin Active
- 2 Until
- 3 MAD Mayfair
- 4 Ultimate Performance
- 5 V London
- 6 Third Space Mayfair





# At the heart of Mayfair, Marylebone and the Royal Parks

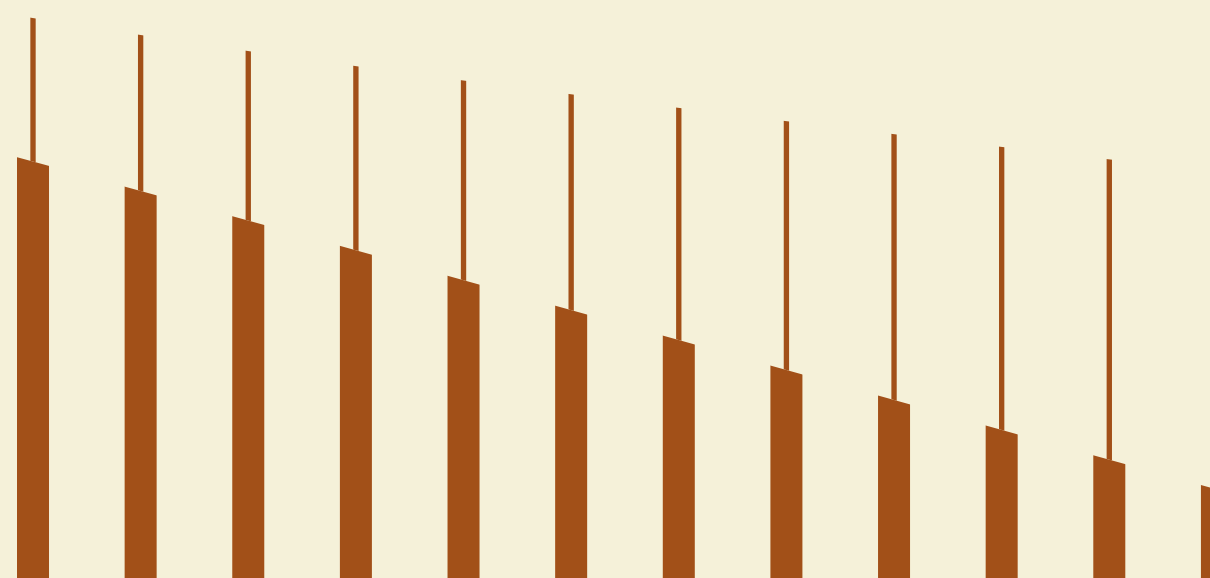


LOCATION

Perfectly located,  
in London's most  
sought-after  
neighbourhood.

CONNECTIVITY

-  **MARBLE ARCH**  
Central  
🚶 2 mins
-   **BOND STREET**  
Jubilee | Central | Elizabeth  
🚶 3 mins
-  **OXFORD CIRCUS**  
Bakerloo | Central | Victoria  
🚶 8 mins



# Timeless elegance in tune with everyday energy



Isola

5 mins



Mount Street Gardens

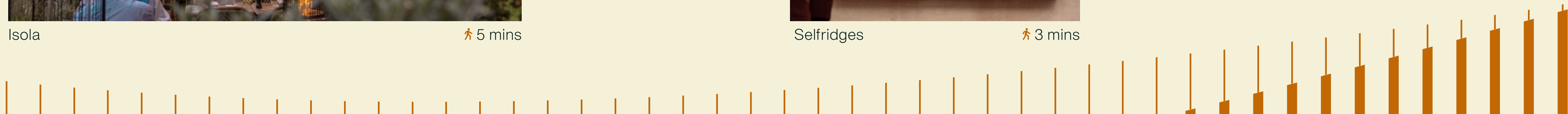
9 mins



Selfridges

3 mins

Tree-lined streets, elegant architecture and a strong sense of place define the area. Mornings begin with local coffee spots and independent shops, while afternoons drift through galleries and quiet corners. As evening arrives, dining and culture bring a subtle energy, all within a setting that remains considered and composed.





Marchesi

🚶 11 mins



Roka

🚶 2 mins

MAYFAIR

## 22 Michelin star restaurants



The Italian Greyhound

🚶 8 mins



Mercato Mayfair

🚶 1 mins

LOCAL AREA



St Christopher's Place

🚶 4 mins



The Audley

🚶 7 mins



Carpenters Arms

🚶 8 mins

MARYLEBONE

Village charm  
pouring into  
post-work spirit



Daisy Green

🚶 5 mins

# Mindful management

Hands-on responsible management from REM, a team managing high-profile London real estate, including iconic landmarks like The Shard.



The Park House team.

Consistently delivering an exceptional level of service, the Park House building management team are committed to creating a seamless and enjoyable experience for everyone working in and visiting the building.



Park House's rooftop apiary.

A thoughtfully curated programme of occupier events creates a connected community at Park House, including visits to the rooftop beehive and sensory garden – memorable moments that help occupiers connect with the building, each other and the environment around them.



PARK HOUSE  
MAYFAIR

**CBRE**

**ADAM COSGROVE**

adam.cosgrove@cbre.com

+44 (0) 7500 872851

**JOSEPH GIBBON**

joseph.gibbon@cbre.com

+44 (0) 7585 987546

**CELESTE SAVAGE**

celeste.savage@cbre.com

+44 (0) 7940 002601

[parkhousew1.co.uk/offices](https://parkhousew1.co.uk/offices)

Whilst the statements contained in these particulars are given in good faith and as a general guide to the property, they do not form any part of an offer or contract. Neither the lessor, or any person in the employment of CBRE, has any authority to make or give any representation or warranty whatsoever in relation to this property. Interested parties must satisfy themselves by inspection or otherwise as to the correctness of these particulars. The photographs show only certain parts of the property as they appeared at the time they were taken. CGI's are indicative and design is subject to change. Areas, measurements and distances given are approximate only. Information correct at May 2026. Park House Oxford Street Limited.

Designed by Siren